



# Forest Trail Spring Hike

Kandava - Sabile (17 km)

April 23, 9:00-16:00

## WHAT IS THE FOREST TRAIL?!



**The Forest Trail** is a long distance hiking route (in total 2141 km), a part of the European long-distance hiking route E11 in the Baltic States that leads through the most forested lands, regional, nature and national parks of Lithuania, Latvia and Estonia. The route starts from the Polish-Lithuanian border near the town of Lazdijai, leads through Latvia, turning into Riga, and finishes in Tallinn, Estonia. Name in Lithuania: Miško takas; in Latvia: Mežtaka; in Estonia: Metsa matkarada.

More information about the Forest Trail on our website [www.baltictrails.eu](http://www.baltictrails.eu).

## FOREST TRAIL SPRING HIKE KANDAVA SABILE

**Join our 17 km scenic Forest Trail section #95 from Kandava to Sabile (Zviedru cepure) Spring Hike.** Bring hiking boots, drinking water, spare socks, and remember to dress accordingly to weather. The hike route starts at Ozolaji open-air stage in Kandava (GPS: 57.030567, 22.773616). The hiking route will reach a holiday complex "Zviedru cepure" along historic, rural and nature experiences mainly on small gravel and dirt roads. Expected total elevation change ~ 250 m, highest point in route – 82 m. The route is located in the territory of the "Abavas senleja" ("Abava valley") nature park.



**Registration >>> [ej.uz/springhikingfestival](http://ej.uz/springhikingfestival).**

Registration for the event closes midnight on the 10th of April or earlier if the maximum number of participants is reached. Participation – free.

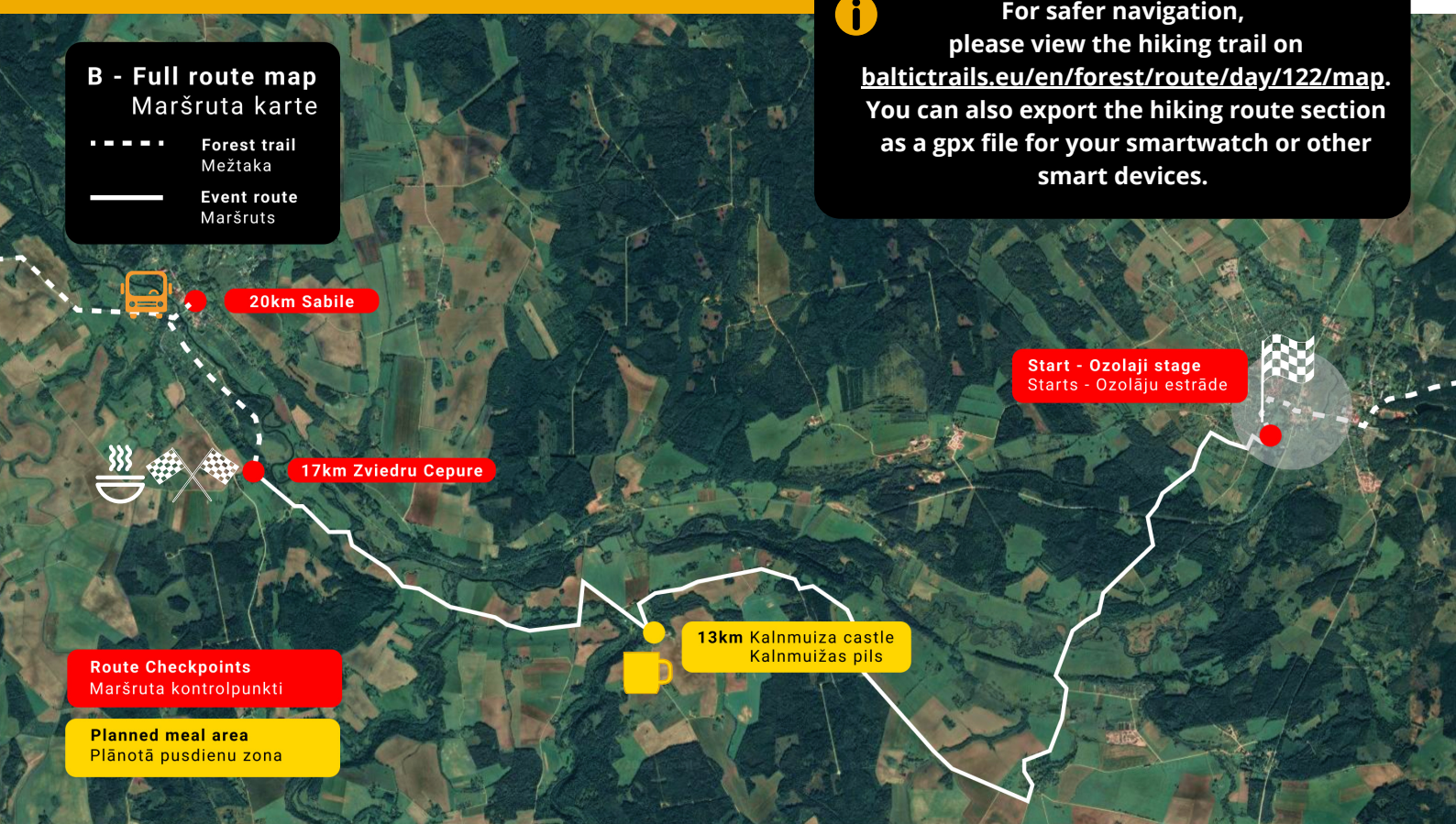
More information [lauku@celotajs.lv](mailto:lauku@celotajs.lv).

## EVENT PROGRAM:

- 07:00 Intercity bus (Riga – Kandava) departure from Riga Bus Station (for those going to Kandava by public transport).
- 08:32 Intercity bus arrival at Kandava bus station (to the starting point - about 0.7 km). For those who travel to Kandava with their own transport – distance from the bus station parking lot to the Ozolaji stage - about 0.7 km, from other parking lots - about 0.9 km.
- 08:50 Participant meeting at Ozolaji open-air stage.
- 09:20 Instructions for participants & start of the morning hike.
- 12:30 Planned arrival at Kalnmuīža manor. Tea and light snacks available. To be environmentally friendly, please bring your own cup for tea. It will be possible to refill water bottles.
- 13:30 Start of the afternoon hike to “Zviedru cepure”.
- 15:30 Planned arrival at “Zviedru cepure”. Hot soup available. To be environmentally friendly, please bring your own bowl and spoon for soup.
- 16:30 Organized bus for car drivers from "Zviedru cepure" to Kandava – for those for whom the "Zviedru cepure" is the final point of the hike. More active hikers can continue the hike to Sabile accompanied by an instructor (an additional 3 km to the Sabile bus stop). There will be no organized bus in Sabile, but participants can return to Kandava or Riga by intercity bus (departure from Sabile at 18:19).

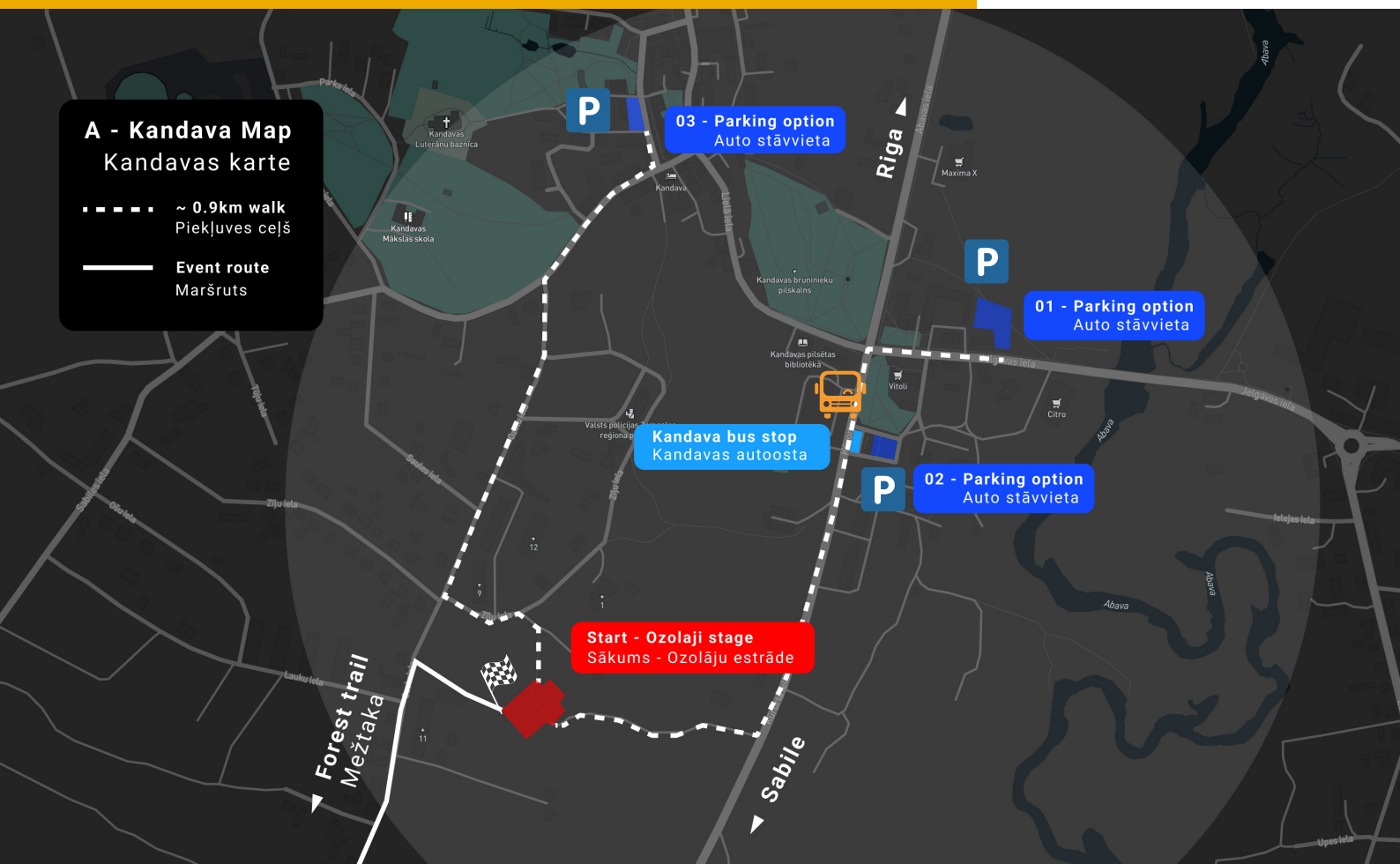
**NB!** Photos and/or videos of you may be taken during this event and used for promotional purposes. If you have any comments & questions, feel free to call organisers: **+371 26368790** Andra or **+371 20227957** Anna.

## MAP OF THE HIKE





## STARTING POINT OF THE HIKE AND THE NEAREST PARKING OPTIONS



For participants with personal transport we recommend leaving your vehicles in the parking lots indicated on the map:

- 01. parking lot at Kandava market, GPS: 57.034413, 22.782501;
- 02. parking lot at Kandava bus station, GPS: 57.033061, 22.780482;
- 03. parking lot at Kandava Tourist Information Center, GPS: 57.036615, 22.775681;

The start of the hike at the Ozolāji stage, GPS: 57.030598, 22.773611.

Several accommodations, catering, etc. service providers are available in Kandava and Sabile territory. See more at [www.baltictrails.eu/en/forest/route/day/122/services](http://www.baltictrails.eu/en/forest/route/day/122/services).

## PLEASE FOLLOW US



Latvia: [@Mežtaka – Forest Trail](#)

Lithuania: [@Baltictrails LT: Miško takas - Jūrų takas](#)

Estonia: [@Metsa matkarada - Forest trail](#)



Latvia: [@Meztaka](#)

Lithuania: [@Miško takas - Jūrų takas](#)

Estonia: [@Metsa matkarada - Forest trail](#)



[@Forest Trail](#)

## PROJECT AND PARTNERS

Project LLI-448 “Development of Forest trail in Latvia and Lithuania and expanding the Baltic Coastal Hiking route in Lithuania” (Hiking project) is being implemented with the support of the European Union Interreg V-A Latvia–Lithuania Cross Border Cooperation Programme 2014–2020.

Total costs of the project are EUR 788.104. Co-funding by the European Regional Development Fund is EUR 669.888.

This publication has been produced with the financial assistance of the European Union. The contents of this publication are the sole responsibility of Latvian Country Tourism Association “Lauku ceļotājs” and can under no circumstances be regarded as reflecting the position of the European Union.



### LEAD PARTNER:



### PROJECT PARTNERS:

#### LATVIA



#### LITHUANIA



**The Abava Valley** is up to 2 km wide and about 30–40 metres deep, so hikers can enjoy beautiful landscapes. In Sabile, you can taste ciders and wines brewed in the vicinity and beyond. The territory of Pedvāle Art Park (less than 100 hectares) features meadows, shrubs, rolling slopes, deep valleys, springs, streams and a winding river. There, an artist residence is established, and exhibitions, concerts, shows are held. The symbol of the town of Kandava is the boulder bridge over the Abava. Natural meadows of the Abava Valley, particularly beautiful in the middle of summer, are sustained by livestock bred for living in the wild.